

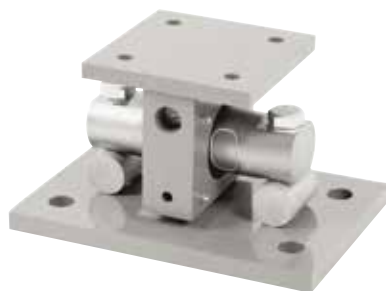
EZ Mount 1 SS

Stainless Steel Weigh Modules, Rice Lake Weighing Systems



Available in configurations with three or four mounting assemblies.
Picture is a representation of actual product.

The EZ Mount 1 Series weigh module utilizes the double-ended beam design with an articulating top plate to provide superior accuracy in any loading condition. The double-ended beam design means there is less cumbersome hardware and each module has a lower profile than modules of different configurations. FM approved RL70000 SS Series load cells give you accuracy and dependability in many applications, including intrinsically safe and explosion proof areas.



Module with RL70000 SS double-ended shear beam load cell.

Complete Kit Includes

- One JB4SS NEMA Type 4X stainless steel signal trim junction box
- Three or four EZ Mount 1 stainless steel compression mounts
- Three or four RL70000 SS stainless steel double-ended shear beam load cells
- 25 ft of our hostile environment EL147HE SURVIVOR® load cell cable

Standard Features

- Capacities (per module): 5000-150,000 lb (2268-60,039.0 kg)
- Unique sliding pin design compensates for thermal expansion/contraction
- NTEP Certified load cells (10 k - 100 k)
- Self-checking
- Easy load cell replacement
- Simplified design allows bolting directly to tank and floor
- Center-loaded double-ended shear beam design
- Low-profile design
- 304 stainless steel construction

Optional Features

- Kits available with VPG-Revere 9103 load cell, capacities in 5,000 lb-150,000 lb (2268.0 kg-68,039.0 kg)

Applications

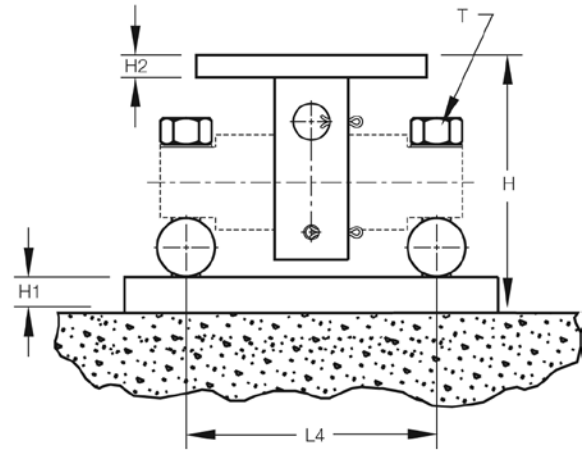
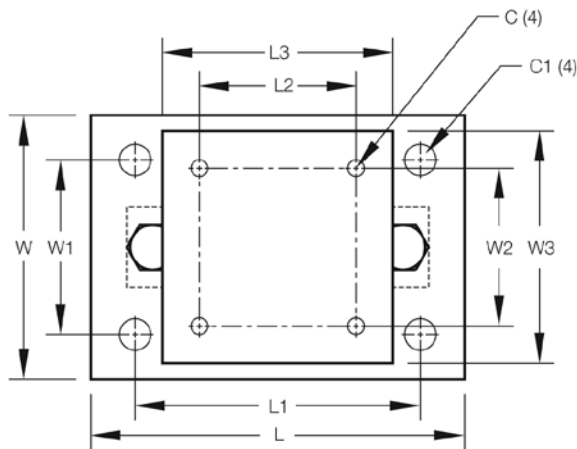
- Medium to heavy-capacity tank and hopper weighing applications

Load Cell Certifications



EZ Mount 1 SS

Stainless Steel Weigh Modules, Rice Lake Weighing Systems

**Dimensions**

Rated Capacity	C	C1	H	H1	H2	L	L1	L2	L3	L4	T	W	W1	W2	W3
lb/in															
5,000-20,000	0.56	1.06	5.31	0.75	0.50	11.00	8.00	3.00	6.00	6.87	5/8-18 UNF	7.50	4.00	3.00	6.00
30,000-60,000	0.68	1.19	8.43	1.00	0.75	15.00	11.50	5.12	8.00	8.50	1-14 UNS	10.00	6.00	5.12	8.00
100,000	0.81	1.38	10.37	1.25	1.25	18.00	14.00	7.50	10.00	9.50	1-14 UNS	12.00	9.00	7.50	10.00
150,000	0.81	1.38	10.37	1.25	1.25	18.00	14.00	7.50	10.00	9.50	1-14 UNS	12.00	9.00	7.50	10.00
kg/mm															
2,268.0-9,071.9	14.2	26.9	134.9	19.1	12.7	279.4	203.2	76.2	152.4	174.5	5/8-18 UNF	190.5	101.6	76.2	152.4
13,607.8-27,215.5	17.3	30.2	214.1	25.4	19.1	381.0	292.1	130.0	203.2	215.9	1-14 UNS	254.0	152.4	130.1	203.2
45,359.2	20.6	35.1	263.4	31.8	31.8	457.2	355.6	190.5	254.0	241.3	1-14 UNS	304.8	228.6	190.5	254.0
68,039.0	20.6	35.1	263.4	31.8	31.8	457.2	355.6	190.5	254.0	241.3	1-14 UNS	304.8	228.6	190.5	254.0

Order Information

Load Rating (Per Module)	Part#	Price
Single Module (Does NOT Include Load Cell)		
5,000 lb-20,000 lb	2,268.0 kg-9071.9 kg 17943	Consult
30,000 lb-60,000 lb	13,607.8 kg-27,215.5 kg 17944	Consult
100,000 lb	45,359.2 kg 17945	Consult
150,000 lb	68,039.0 kg 29011	Consult
3-Module Kit		
5,000 lb*	2,268.0 kg 36195	Consult
10,000 lb	4,535.9 kg 36196	Consult
20,000 lb	9,071.9 kg 36197	Consult
30,000 lb	13,607.8 kg 36198	Consult
40,000 lb	18,143.7 kg 36199	Consult
50,000 lb	22,679.6 kg 36200	Consult
60,000 lb	27,215.5 kg 36201	Consult
100,000 lb	45,359.2 kg 36202	Consult
150,000 lb*	68,039.0 kg 43288	Consult

* Non-NTEP Certified

Order Information

Load Rating (Per Module)	Part#	Price
4-Module Kit		
5,000 lb*	2,268.0 kg 36203	Consult
10,000 lb	4,535.9 kg 36204	Consult
20,000 lb	9,071.9 kg 36205	Consult
30,000 lb	13,607.8 kg 36206	Consult
40,000 lb	18,143.7 kg 36207	Consult
50,000 lb	22,679.6 kg 36208	Consult
60,000 lb	27,215.5 kg 36209	Consult
100,000 lb	45,359.2 kg 36210	Consult
150,000 lb*	68,039.0 kg 43289	Consult
Dummy Load Cells (Mild Steel)		
5,000 lb-20,000 lb	—	33749 Consult
30,000 lb-60,000 lb	—	74016 Consult
100,000 lb	—	94175 Consult
150,000 lb	—	158715 Consult
Grounding Kit		
5,000 lb-60,000 lb	126419	Consult

Includes ground strap and mounting hardware per mount

